

FOR SALE

UPTON LAKE, EAST WATERSIDE, UPTON-UPON-SEVERN, WR8 OPB

**PHASE 2
RELEASED
LIMITED AVAILABILITY**



Starting from
£315,000

 775 SQ FT Living Space



LOCAL AMENITIES

Bus Stop		6 mins
Supermarket		2 mins
Train Station		13 mins
Doctors		4 mins
Hospital		15 mins
Heritage Centre		8 mins

RESIDENTIAL FLOATING HOMES AVAILABLE AT UPTON LAKE

Nestled alongside the mighty River Severn and just a stone's throw away from the enchanting market town of Upton-upon-Severn, Waterfront Living is a pioneering project that sets the standard for floating homes. Each floating lodge boasts two-double bedrooms, beautiful open-plan living space, and large windows with views across the water. This established development offers the appeal of a modern lifestyle in an idyllic and unique setting. Simply select your berth and secure it with a £1000 deposit. You can then personalise your home with a choice of colours, fittings and furnishings and get ready to start your new lifestyle in this exciting community in Upton-upon-Severn.

www.waterfront-living.com | info@waterfront-living.com | 01933 829 940

Tingdene Group, Bradfield Road, Finedon Road Industrial Estate, Wellingborough, Northants NN8 4HB.



THE GRAYLING | UPTON LAKE

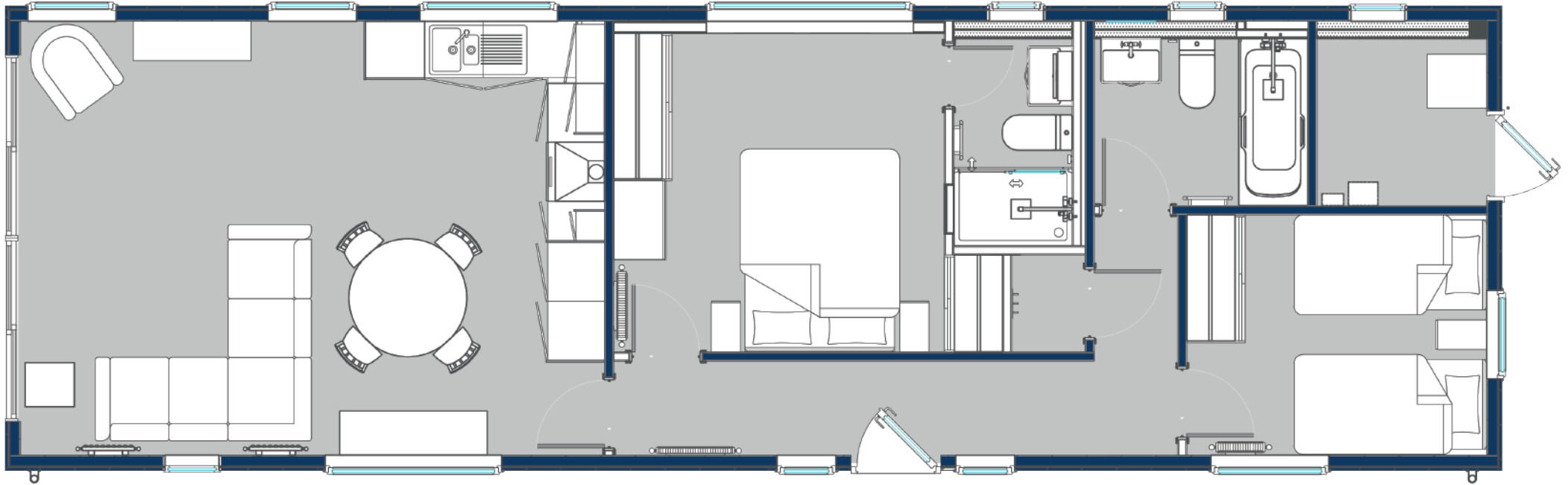
40' x 19.5' | 12.19m x 5.94m | 2 Bedrooms | 2 Bathrooms



WATERFRONT

• L I V I N G •

PART OF THE TINGDENE GROUP



Intelligent design, ground-breaking creativity and beautiful craftsmanship - the perfect trio which make up the foundations of The Grayling floating home. From the moment you step foot in the smart glazed hallway and glimpse the spacious open plan living space, you'll know this floating home has been designed with peace and tranquillity in mind. The full height windows throughout allow natural light to stream through the space and provide beautiful views across the lake and into the surrounding woodland.

Begin each day gazing at the sunrise from your bed and steal some valuable you time with a good book and a cup of coffee. Outside, a fabulous decking area gives you the perfect space for a spot of al fresco dining or a cosy retreat for a magical evening under the stars. This beautifully designed home is suitable for residential use, featuring an open plan lounge, dining area and kitchen, a master bedroom with en-suite, a second bedroom and a family bathroom.

www.waterfront-living.com | info@waterfront-living.com | 01933 829 940

Tingdene Group, Bradfield Road, Finedon Road Industrial Estate, Wellingborough, Northants NN8 4HB.



/WaterfrontLivingbyTingdene



@wfl_tingdene